

Certified Animal Chiropractor



Dr. D.S. Olson

See article on Page 2 and  
ad on page 12  
[www.quantumhealthchiro.com](http://www.quantumhealthchiro.com)

See ad on page 8

A Better Way Pet Care  
Your Health Food Store  
for Pets!  
661.948.3939

As we near our 20th year  
in the A V, come help us celebrate  
at our new location!

See ad on page 8

At AWP our goal is to be your ...  
"FUR" ever GROOMER  
AWP DOG GROOMING  
661.471.9160

See ad on page 7

**Carpeteria**  
Design Center  
ASK FOR BARRY  
42212 10th St. W., Lancaster, CA  
(661) 951-2200  
SPECIAL WE PAY SALES TAX WITH AD ...

PET LOVERS JOURNAL AND RESOURCE GUIDE

# CLAWS

Critters Lives Are Worth Saving

May/June  
2022  
Volume 2  
Issue 1

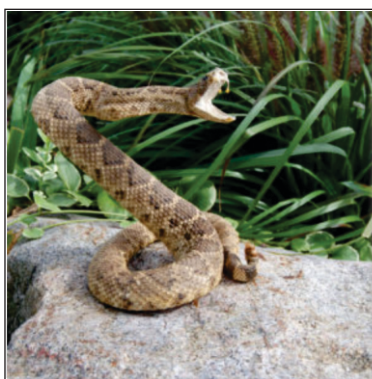
[www.claws-magazine.com](http://www.claws-magazine.com)  
See Focus Statement on pg 3

## WHAT DOG OWNERS NEED TO KNOW ABOUT RATTLESNAKE SEASON

(Dr. Larry Bosma D.V.M. Ret)

While hiking is hugely popular this time of year, there are things dog owners can do to keep both themselves and their dogs safe.

As the temperatures continue to rise during the month of July in California, that means rattlesnakes are still around. The most popular sighting times are between the months of April and October. And yes, they are active during the day.



**WHILE HIKING IS HUGELY POPULAR THIS TIME OF YEAR, THERE ARE THINGS DOG OWNERS MUST DO ...**

While hiking is hugely popular this time of year, there are things pet parents can do to keep both themselves and their dogs safe. First off, if pet owners approach a sign that reads, "Beware of Rattlesnakes," rethink the hike, especially during rattlesnake season.

While most snakes in California are harmless, that's not true for rattlesnakes. Hikers can find them in the following areas: Rocky terrain, Desert, Forest and Prairie.

When pet parents are out and about with their dogs, implement these precautions to help avoid a rattlesnake run-in.

- 1) Keep dogs on a leash, always,
- 2) Stay on the main trail and don't wander from it,
- 3) Keep those eyes on the trail, be alert, and look ahead,
- 4) Avoid grassy areas
- 5) Keep the cell phone on hand, but practice "situational awareness"!

In other words, do not play games or text while walking! If you must use your phone, stop in a safe place, look around, then use your cell while keeping one eye on the surrounding terrain,

- 6) Avoid climbing over rocks

The first rule of keeping dogs on a leash is an important one. Snake bites can occur less than a few feet away from the main trail path. Keeping pets close is vital.

If a rattlesnake run-in happens, leave it alone and stay far away from it. When-ever taking a dog out for a hike, have a list on hand for a veterinarian hospital in the event there's an emergency. With that said, despite all the precautions that pet parents can take, accidents do happen. If a dog is bitten by a snake, try and stay calm, but move fast.

If possible, carry the pet to the car to slow down their heart rate and the spread of

venom into the bloodstream.

Call the animal hospital as soon as possible to let them know the emergency. If they don't have the antivenin on hand, they



Ask Your Vet About  
Rattlesnake  
Vaccine for Dogs

will provide a referral. But if they do have it, the medical team will get prepared and mobilized for the animal's arrival. Enjoy the summer.

## Contents

PG 1	It's Rattlesnake Season
PG 2	Advertisers List
PG 3	CLAWS Magazine Recipes Pet Insurance FAQ
PG 4	May/June 2022 Pet Holidays Photo & Essay Contest
PG 5	Local Clinics, Shelters and Rescues
PG 7	The real costs of pet ownership
PG 9	McSAM Memorial for AV Business Partners Needed
PG 10	Canine Marijuana Toxicity
PG 11	Classified Ads

Please tell our advertisers you saw them in CLAWS Magazine

## ADVERTISERS LIST

- Pg 2 **Tails 2 Scales Pet Store**  
 Pg 3 **Recipes & Focus**  
 Pg 4 **FunFur U - In home Pet Care & Photo/Essay Contest & Pet Holidays**  
 Pg 5 **Local Clinics, Shelters & Rescues**  
 Pg 6 **Pet Insurance Guide**  
 Pg 7 **Carpenteria**  
 Pg 8 **AWP Grooming A Better Way Pet Care**  
 Pg 9 **Partners Needed McSam's Proposal**  
 Pg 11 **NV Vet Center Classified Ads**  
 Pg 12 - **Quantum Health Pet & People Chiro**

### Class 2 Low-Level Cold Laser Therapy Frequently Asked questions Courtesy of Dr. D. Olson

#### Take away their pain without harmful side effects. Is Low level Laser Therapy painful for my pet?

No, most animals do not feel anything during laser therapy. We have observed that pets acknowledge the light and, in most cases, an obvious relaxed state is achieved within a few minutes.

#### Does Low level Laser Therapy cause heat or damage to the tissue?

NO, true Low-Level Lasers, by virtue of their design, are non-heat producing and do not alter the cell structure. The laser irradiation is non-ionizing, which means it does not collect in the tissue.

#### What conditions can be helped by the use of Low-Level Laser Therapy?

Whenever your pet has an injury or a disease there is damage to the associated tissue. Low Level Therapy enhances healing in numerous conditions: wounds, tendon inflammation, muscle injuries, trauma, bone regeneration, nerve injuries, pain, skin conditions, visceral diseases and immune enhancement.

#### How is Low Level Laser Therapy Administered?

In most cases the probe, containing the laser diode(s), is held in place or moved gently over the treatment area at a distance of approximately 4" – 12." Not only does the area of involvement receive treatment: the spinal nerve root which leads to area of concern also may receive treatment.

#### Does Low Level Laser Therapy help my pet heal faster?

Yes! During treatment of the tissue with a low-level laser, a photochemical interaction takes place between the laser beam and the cells. Photons from the laser affect the tissue at the cellular level. The cold laser enters the tissue, alters cell membrane permeability and, at cellular level, is absorbed in the mitochondria thereby increasing the energy (adenosine triphosphate /ATP), enhancing cell regeneration and speeding the healing process of your pet.

#### Learn how low-level laser therapy can improve your animal's quality of life. Are there any side effects?

There are no known or published adverse and mobility followed by a deep effects of true Low Level Laser Therapy. Some animals (for example, older canines) may have obvious increased energy and relaxed sleep. Low Level Lasers do not have a thermal effect and are used to facilitate tissue healing rather than destroy tissue.

#### How long does it take for the laser to heal or improve a condition?

Although this is determined by

Continued on pg 12



**SNAKES, LIZARDS & FEEDERS GALORE!**  
**IF YOU DON'T SEE IT HERE... JUST ASK!!!**  
**WE CAN GET MORE...**  
  **Tails2Scales**

**WE CARRY**



**AND OTHERS...**

**15% OFF Live Feeders**  
 Must Mention ad in CLAWS.  
 No cash value. One Coupon per order per day.



**Tails 2 Scales**  
**PET STORE**

**661.951.1000**

**1832 W. Ave K, Ste 5, Lancaster, CA 93534**

**Please tell the clinics or other advertisers you saw them in CLAWS Magazine**

## Claws Magazine Recipes

### DOGGIE COOKIES

#### Ingredients

2 cups all-purpose flour  
 1 cup cornmeal  
 1 large egg beaten  
 3 tablespoon vegetable oil  
 1/2 cup chicken broth  
 2 teaspoons dried parsley  
 1 cup chopped cooked chicken livers  
 1 teaspoon brown sugar  
 1 cup canned mixed vegetables mashed  
**DRAINED & RINSED**

#### Instructions

Combine flour and cornmeal. In a separate bowl, beat egg with the oil; add broth and parsley, mixing well. Slowly stir the dry ingredients into the wet ingredients, mixing well. Add the chicken livers and mix well. Turn out onto a floured work surface and knead for 3 to 5 minutes. Roll dough to 1/2-inch thickness and cut into desired shapes. Bake at 400°F for 15 minutes or until nicely browned. Cool completely on wire racks.

Notes  
 Store in refrigerator.

See more great recipes...

[www.newenglandrecipes.com/dog-cat-meal/](http://www.newenglandrecipes.com/dog-cat-meal/)

### CLAWS Recipes

Feel free to send us your recipes. You will get credit for yours and a gift at the end of the year. Be sure to include your name, address (will not be published) and phone number. Tell us a bit about yourself and what animal it is suited for. Include a photo of you and or your pet.

**CLAWS Magazine Recipe** c/o All Creatures Media 43625 Sierra Highway Ste P - Lancaster, CA 93534



**All Creatures Media**  
 Marketing, Advertising Commercial Art and Graphics  
 for Animal Related Businesses from Pet Suppliers,  
 Veterinary Clinics & Hospitals to Rescue Groups

Welcome to the Antelope Valley's PREMIER MEDIA PLATFORM  
 Dedicated to enhancing the animal/human relationship by providing a  
 resource center for sharing our experiences both by professionals and  
 amateur care providers.

**Contact John Henderson or Larry Bosma D.V.M., at  
 All Creatures Media \* 661-341-4252**

## Pet Insurance Shopping Guide

Pet insurance offers protection against unplanned expenses. When shopping, consider the monthly cost, deductible, and any limitations of the plan.

#### Overview:



When shopping for pet insurance, it's important to know what to look for so you can easily compare products. Here are some considerations to keep in mind:

#### What is pet insurance?

Much like insurance for humans, pet insurance is a policy you can buy that will help pay for medical

treatment for your pets. Pet insurance can be used for yearly check-ups, medicine to treat infections, treatment for physical injuries or illnesses, and sometimes even dental work.

Most pet insurance plans will provide coverage for dogs and cats since they tend to be the most expensive to treat, but some pet insurance plans also cover other pets like reptiles or birds. With most pet insurance plans, you will pay a monthly premium and for all types of care until you meet your deductible.

continued on pg 6

PET LOVERS JOURNAL AND RESOURCE GUIDE

**CLAWS**

CRITTERS LIVES ARE WORTH SAVING  
[www.claws-magazine.com](http://www.claws-magazine.com)

### Focus Statement

The staff is dedicated to the care of animals. Whether pets or livestock, we surround ourselves with people who demonstrate a passion for pets and compassion for their care providers.

We will provide a venue where animal lovers can share their experiences as they focus on the unconditional positive treatment of their charges. Send Resumes to us NOW!

WE ARE HIRING ...

#### PUBLISHER & EDITOR

John Henderson

#### EDITORIAL ASSISTANT

Karen Henderson

#### CONSULTANT & SENIOR WRITER

Larry Bosma, DVM (Ret)

#### CONTRIBUTING WRITERS

Kimberly Maevers

kimberly@funfuru.com

#### DISTRIBUTION MANAGER

Needed

The following positions are available...

~PRODUCTION MANAGER

~MARKETING & AD SALES

Send your letters,

comments, article submissions

or resumes to:

All Creatures Media EDITOR

43625 Sierra Highway, Suite P

Lancaster, CA 93534

Email:

clawsmag @ roadrunner.com

**661.341.4252**

**May/June  
2022 Pet Holidays**

May brings some extra love for dogs of all kinds: Chihuahuas, purebreds, mutts, specially-abled and rescues!

**Monthlong Observations:**

National Pet Month  
Chip Your Pet Month

**Weeklong Events:**

May 1-7: Be Kind to Animals Week

May 1-7: Puppy Mill Action Week

May 1-7: National Pet Week

**Holidays:**

May 1: National Purebred Dog Day

May 1: Mayday for Mutts

May 3: Specially-abled Pets Day

May 8: National Animal Disaster Preparedness Day

May 14: National Dog Mom Day

May 14: International Chihuahua Appreciation Day

May 20: National Rescue Dog Day

**June**

Holidays June has to offer.

**Month-long Observations:**

National Adopt a Cat Month

National Zoo and Aquarium Month

National Pet Preparedness Month

**Weeklong Events:**

June 5-11: Pet Appreciation Week

**Holidays:**

June 4: National Hug Your Cat Day

June 4: International Corgi Day

June 14: World Pet Memorial Day

June 20: National Take Your Cat to Work Day

June 20: Ugliest Dog Day

June 24: Take Your Dog to Work Day



**Kimberly Maevers, CPPS**  
Managing Partner

661.865.7412

Kimberly@FunFurU.com  
www.FunFurU.com



**Photo Contest & Essay Contest**



**CLAWS Photo Contest will accept your pet photos throughout the year. PLEASE NO IDENTIFIABLE PEOPLE . . . Our goal is to build an annual calendar to raise funds for low income families and their pets medical care.**

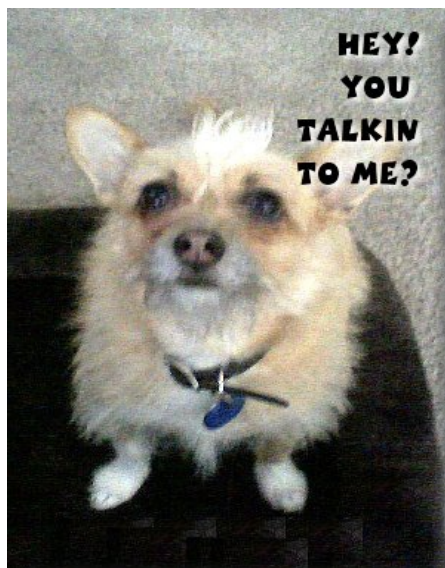
**Winners pets will be featured and receive special discounts to be determined throughout the year. CLAWS Monthly Essay of 500 words or less can cover any RESCUE pet & family related uplifting occurrences. Photos and Essays are due on the 15th of each month and MUST INCLUDE your name, age (for children) address & phone number.**

**We will call to verify your entry...**

**Include Pets Name and Age**

**clawsmag @ roadrunner.com**

43625 Sierra Highway\* Lancaster, CA (at W. Ave K)



**Please tell the clinics or other advertisers you saw them in CLAWS Magazine**

## Local Clinics, Shelters and Rescue Groups

### All Care Pet Clinic

3135 Rancho Vista Bl, E,  
Palmdale, CA 93551

661 265 7373

### Mission Animal Hospital

845 W Palmdale Bl,  
Palmdale, CA 93551

661 526 1300

### Quartz Hill Veterinary Clinic

42237 50th St W,  
Quartz Hill, CA 93536

661 943 7896

### AV Animal Hospital

1326 W Avenue N,  
Palmdale, CA 93551

661 273 1234

### Pets R Us

40125 Tenth St W,  
Palmdale, CA 93551

661 272 1600

### Palmdale Veterinary Hospital

38568 Sixth St E,  
Palmdale, CA 93550

661 273 1555

### AV Veterinary Center

1055 W Columbia Way,  
103,

Lancaster, CA 93534

661 729\_1500

### North Valley

#### Veterinary Center

43619 Sierra Hwy,  
Lancaster, CA 93534

661 945 7906

### Westside Animal Hospital

42052 50th St W,  
Lancaster, CA 93536

661 943 0303

### Animal Medical Center of The Antelope Valley

2270 E Palmdale Bl, Ste C,  
Palmdale, CA 93550

661 441 1011

### Lancaster Pet Clinic

2060 W Avenue K,  
Lancaster, CA 93536

661 949 9389

### Nyholt Jim DVM

1326 W Avenue N,  
Palmdale, CA 93551

661 273 1234

### Palm Plaza Pet Hospital

2501 E Palmdale Bl, Ste. D,  
Palmdale, CA 93550

661 272 4551

### High Desert Animal Care Hospital

3243 E Palmdale Blvd,  
Palmdale, CA 93550

661 272 1616

### Bldv. Veterinary Hospital

354 W Lancaster Blvd,  
Lancaster, CA 93534

661 942 1489

### Smith Veterinary Hospital

44623 Tenth St W,  
Lancaster, CA 93534

661 948 5065

### Sears Veterinary Hospital

565 W Avenue I,  
Lancaster, CA 93534

661 948 5911

### Desert Equine Hospital Inc

42636 Sixth St E,  
Lancaster, CA 93535

661 948 1113

The following list of local shelters and rescues has been provided as a public resource only, and covers the cities of the Antelope Valley. To reach their website, type the URL without spaces, then hit enter on your browser...

### A Passion for Paws Akita Rescue, Inc.

[apassionforpaws.org/](http://apassionforpaws.org/)

### Aussie Rescue of Southern Calif Inc.

[aussierescuesocal.com/](http://aussierescuesocal.com/)

### A Pet Rescue Kennels, Inc.

[petfinder.com/shelters/CA913.html](http://petfinder.com/shelters/CA913.html)

### Basset Hound Rescue of S. Calif

[bassethoundrescue.org](http://bassethoundrescue.org)

### California Miniature Schnauzer Rescue (CMSR)

[schnauzers.us](http://schnauzers.us)

### California City Animal Control

[californiacity-ca.gov/CC/index.php/animal-control](http://californiacity-ca.gov/CC/index.php/animal-control)

### CA Animal Rescue & Education Sanctuary (C.A.R.E.S)

[facebook.com/groups/1517407391890058/](https://facebook.com/groups/1517407391890058/)

### Community Effort Animal Rescue (C.E.A.R.) (Former: AV Dog & Cat Rescue)

[communityeffortanimalrescue.com](http://communityeffortanimalrescue.com)

### Dachshund Rescue & Placement

[doxykeeper.net/](http://doxykeeper.net/)

### Doberman Pinscher SOS

[dobiesos.net/](http://dobiesos.net/)

**Doggy Smiles Rescue ( see pg 4 )**  
[calcitypd.org/Animal-Control.html](http://calcitypd.org/Animal-Control.html)

### Forgotten Angels Cat Rescue, Inc

[forgottenangelsrescue.org/](http://forgottenangelsrescue.org/)

### French Bulldog Village Rescue

[frenchbulldogvillage.org/](http://frenchbulldogvillage.org/)

### GreySave Greyhound Adoptions

[greysave.org/](http://greysave.org/)

### Halfway to Home

[halfwaytohome.net/](http://halfwaytohome.net/)

### High Desert Angels for Animals

[highdesertangelsforanimals.com](http://highdesertangelsforanimals.com)

### The Homestretch Greyhound Rescue Adoption

[homestretchgreys.org/](http://homestretchgreys.org/)

### Lange Foundation

[langefoundation.org](http://langefoundation.org)

### L.A. County Animal Care & Control:

Lancaster  
[animalcare.lacounty.gov/](http://animalcare.lacounty.gov/)

### Ruff Patches

[ruffpatches.org/](http://ruffpatches.org/)

### SecondHand Animals

[lpsecondhandanimals.com](http://lpsecondhandanimals.com)

### Southern California Labrador Retriever Rescue

[sclrr.org/](http://sclrr.org/)

### Sunny Saints

[sunnysaints.org/](http://sunnysaints.org/)

### Westside German Shepherd Rescue of LA

[sheprescue.org/](http://sheprescue.org/)

### Woof Project

[woofproject.org/](http://woofproject.org/)

We offer a free listing to all clinics, veterinarians and rescue groups. If we missed your endeavor, feel free to email us ( John Henderson \* [clawsmag@roadrunner.com](mailto:clawsmag@roadrunner.com)) the 3 or 4 line (Name, Speciality, Contact and website or email) listing and we will include you.

You can pick up your copy of Claws Magazine at these clinics and the advertisers. See our web: [www.claws-magazine.com](http://www.claws-magazine.com) for a list of distribution locals. We NEED a distribution manager! Email us . . .

# Pet Insurance Shopping Guide

continued from pg 3

## Is pet insurance worth it?

Knowing whether or not to spend money now to possibly save money in the future is always a difficult decision. However, the monthly cost of pet insurance is relatively low compared to the savings you'll see. With pet insurance, you'll be able to comfortably pay off any substantial costs you might see if your family pet has an accident, requires x-rays or surgery, or develops a chronic illness. The savings will increase if you have multiple pets and you choose a plan that offers discounts for insuring more than one animal.

While you may have enough money to pay for planned expenses like wellness exams and flea medication, pet insurance offers you some protection to help pay for those unplanned, emergency expenses for your pets.



## What are the important features of pet insurance?

When shopping for pet insurance, you will want to look at several key features. You will want to consider the cost of the monthly premium, the rate and types of deductibles, the reimbursement rate, and any annual or lifetime limits.

A premium is a set amount you will pay each month to your insurance provider regardless of whether or not your pet needs veterinary care. Premium rates vary significantly between policies, so you will want to research the plan to find out the exact rates. The deductible is the amount you are responsible for paying out of

pocket before you are reimbursed any money. Deductibles usually reset annually, but some pet insurance deductibles are based on the type of injury or illness. If your pet has the same injury more than one time, you will only pay the deductible on that injury once. The reimbursement rate is what the insurance company will pay you for medical care after you have met your deductible.

There are a variety of limits on policies. Some pet insurance policies have limits on the amount you can be reimbursed based on the illness or injury and others have annual or lifetime limits.

## What makes the best pet insurance?

The best pet insurance is the one that will help you financially when your pet needs medical care. Rather than worry about costs, you can focus on what's important: your pet's health.

Different pets require different types and levels of care, so the best plan will depend on your pet. You will want to consider the type and breed of your pet and how often your pet typically sees the vet. If your dog or cat is older, it may require more frequent vet visits. In this case, a more comprehensive plan that does not have an upper age limit on new enrollments may be the best plan. However, if you have a younger animal, you may want to look at a plan that does not have lifetime caps on reimbursements.

You should also consider the ability to customize your plan when choosing the best pet insurance. While you may only be interested in accident protection this year, you may need to treat your pet for a chronic illness in the future. Rather than shop for an entirely new plan, consider if the plan you choose will let you customize your pet's care in the future.

## Pet Insurance FAQ

So how do you choose the pet insurance that's right for you? These are the questions consumers are asking when shopping for pet insurance.

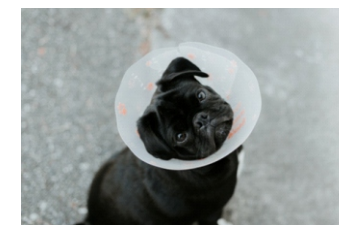
### Is pet insurance accepted everywhere?

Pet insurance is accepted by licensed veterinarians. When you go to the vet, you will be responsible for paying the entire bill, and then you will submit a claim to your pet insurance company for a reimbursement.

### What does pet insurance cover?

Pet insurance will cover different services depending on which type of plan you purchase. Common plans are for wellness,

accidents, illnesses, or some combination of the three.



### What is not covered by pet insurance?

Pet insurance does not usually cover treatment for any pre-existing conditions, which would be anything that is documented on your pet's medical history. The most common pet insurance plans also do not cover routine wellness checks or medicines, but you can often buy an add-on policy to cover these services if you would like.

## Final Thoughts

Deciding on a pet insurance policy comes down to how much protection you want for unexpected vet bills. If you consider your budget, the cost of the monthly premiums, deductibles, and coverage details, you can find the perfect pet insurance policy for the animals in your life.

**Looking to adopt a pet - Call your local Animal Control**  
**Please tell the clinics or other advertisers you saw them in CLAWS Magazine**

### The real costs of pet ownership

By Kimberly Maevers,

managing partner of Fun Fur U – Antelope Valley, LLC

My husband and I were able to celebrate a "Life Well Lived" earlier this month when our precious pup, Foxi Brown, turned 16 years old! While Foxi is doing ok physically and mentally she is slowing down with arthritis in her limbs and spine causing her some pain and mobility challenges. As I reflected on the 15+ years I've had with her I started to think about the significant financial investment pet ownership is.



With the holiday season upon us, I thought I might encourage some deep thought for those of you thinking about adding a first or additional pet to your home or gifting a pet to someone you think needs one. Please consider the costs of pet ownership starting with a high-quality, well-balanced pet food, vaccinations, and a county license. Then, consider the cost for spay or neuter. Add in a pet insurance premium or set that same amount

of money aside each month in a savings account for pet care. And remember, the older the pet gets, the more expensive the insurance policy or probability of veterinary costs will be. Factor in treats, toys, bathing / grooming, wellness checks, dental cleanings, pet-sitting or boarding (for when you're away from home), more treats and toys and you've got yourself a formidable investment in pet ownership.

While Foxi Brown is worth every dime we've ever spent on her, she is not a cheap date. At 16 years old, her prescription diet and medications cost us well over \$100 a month. Her twice weekly chiropractic and laser treatments easily run \$250 month. That's \$4200 annually at a minimum!

It breaks my heart to read a post from a pet owner or rescue that is trying to re-home an aged, ill or injured pet simply because the pet owner didn't have the money to pay for pet care. So, please stop and consider the real costs of pet ownership before you adopt or rescue a pet for yourself or someone else this holiday season.

As always, if you have any questions about pet ownership or pet sitting, do not hesitate to contact me at [Kimberly@FunFurU.com](mailto:Kimberly@FunFurU.com)

**12 mm Laminate Sale**  
(Super thick)

~~\$5<sup>00</sup>~~  
**\$4<sup>99</sup>**

**installed**  
with Silent Pad

+ No Sales Tax  
Ends Jul 31, 2022

**WATER-PROOF LAMINATE On SALE**

**\$2<sup>99</sup>**  
MATERIAL Only

**OAK COLOR**

**BRING IN AD AND PAY NO SALES TAX**

+ No Sales Tax Ends Jul 31, 2022

Pet-Friendly Flooring

**42212 10th St. W, \* Lancaster, CA**

**(661) 951-2200**

WE SELL & INSTALL

Please tell the clinics or other advertisers you saw them in CLAWS Magazine

**A Better Way Pet Care**  
*Your Health Food Store for Pets!*



**15% off All items**

Cannot be combined with any other offer. No cash value. Must show or mention ad or promo code: CLAWS15 at time of visit.

**As we near our 20th year in the AV, come help us celebrate at our new location!**

**www.ABetterWayPetCare.com**



Monday - Friday: 10am-5pm  
 Saturday: 10am-2pm

**661-948-3939**

www.ABetterWayPetCare.com  
 44830 Valley Central Way, Ste 102  
 Lancaster, CA 93536

**At AWP our goal is to be your "FUR" ever Groomer**

**Ask About ...**

**HIRING BONUS**

**AWP DOG GROOMING**

**661-405-9114 Ask for Alex**

**661.471.9160**

**44950 VALLEY CENTRAL WAY Ste 113  
 Lancaster, CA 93536**

**Sunday & Monday: closed  
 Tue - Sat: 8AM - 6PM**

Please tell the clinics or other advertisers you saw them in CLAWS Magazine



## BUSINESS PARTNER NEEDED!

The only investment required is "SWEAT EQUITY". Those interested MUST have a strong passion for animals and compassion for pet lovers and owners.

We are filing for status as a 501 © 3 business. All Creatures Network is poised to become a coalition of animal lovers and care providers. Our care providing groups will; 1. Publish a franchisee magazine designed to generate income to support and disseminate information to pet lovers and healthcare professionals. 2. We will also raise funds for healthcare of pets to low-income families, 3. To raise money to establish a Military, Civil Service Animal Memorial dedicated to bringing awareness to animals injured or sacrificed in service of military, law enforcement, first responders and general animal heroes as they serve their owners, trainers and handlers, 4. And, To establish an Antelope Valley Animal Care Providers coalition.

## PROSPECTUS: Military & Civil Service

### Animal Memorial

Hereafter:



#### PURPOSE:

To establish a national memorial honoring service horses, dogs and birds that have contributed to the military, law enforcement and civil service sectors of service to humankind.

#### OUR FOCUS:

To develop a database that will serve to honor the heroic efforts of service animals in all sectors including military, law enforcement and civil service to include horses, dogs and birds as they provided transportation (equine), assistance in search and rescue (canine), and in communication (homing pigeons).

#### ORGANIZATIONAL DIVISIONS:

##### MILITARY \* LAW ENFORCEMENT \* CIVIL SERVICE

Canine * MC	Canine * LE	Canine * CS
Equine * ME	Equine * LE	Equine * CS
Aviary * MA	Aviary * LE	Aviary * CS

#### OUR GOAL:

To create a physical memorial, located in the Antelope Valley honoring those animals so recognized and to make that physical memorial portable to be available for tour to locations where those animals and their heroic efforts were demonstrated.

#### INFORMATION ABOUT McSam's

The American, Allied forces and civil service workers enlisted many millions of animals to serve and often die alongside their soldiers and rescue workers. These animals were chosen for a variety of their natural instincts and vast numbers were killed, often suffering agonizing deaths from wounds, starvation, thirst, exhaustion, disease and exposure.

For more information, e-mail John Henderson  
clawsmag @ roadrunner.com

Each of these endeavors need dedicated people to provide direction for growth to meet the needs of those animal lovers in the Antelope Valley.

Feel free to send us your suggestions: John Henderson  
\* clawsmag @ roadrunner.com.

We need answers to the question:

"What are the needs of the Antelope Valley pet care providers, suppliers, owners, and rescue groups."

Publisher: John Henderson



**"There is no psychiatrist in the world like a puppy licking your face." Ben Williams**

## We Are Building a Dynamic Sales Team . . .

. . . And Retired Salespeople are encouraged to send a resume or a cover letter outlining your experience and availability. Seniors are especially sought because that population is usually put out to pasture and ignored as past being useful. As disabled seniors, We started the CLAWS Magazine at the ripe old age of 72+ and are living proof that the DREAM DOES NOT RETIRE,

BUT LIVES ON!

Coming up on our 3rd issue - those who said we will wait to see can now support us as a proven endeavor!

Resume to:

clawsmag @ roadrunner.com  
or Call John 661.341.4252

**HAVE YOU HUGGED YOUR SPOUSE, KIDS AND PETS (IN THAT ORDER) TODAY???**

# Marijuana Poisoning in Dogs

by Gemma Johnstone Apr 21, 2021, | <https://www.akc.org/expert-advice/health/marijuana-poisoning-in-dogs/>

The number of cases of marijuana intoxication in dogs has risen dramatically in recent decades. Fortunately, it is rarely fatal, but it can bring about some worrying symptoms, and you should always seek veterinary advice if you suspect your dog has ingested this drug.



## Why Has There Been Such a Drastic Rise in Reported Cases?

In 1996, California became the first state to legalize cannabis use for medicinal purposes. Marijuana is now only prohibited in a few states, and an increasing number also allow its use for recreational purposes.

As a result of the drug's increased accessibility, there has been a significant increase in the reports of dogs suffering from marijuana toxicosis. The Animal Poison Control Center, for example, reported a staggering 765% increase in calls about pets ingesting marijuana in 2019, compared with the same period the previous year. The Pet Poison Helpline also saw an increase of more than 400% in the number of calls they took about marijuana-related incidents over a six-year

period.

The increase in reported cases even prompted a retrospective clinical study that evaluated the trends of marijuana toxicosis in dogs living in a state with legalized medical marijuana usage between 2005 and 2010. There was a concerning four-fold increase in the

number of cases reported to the two Colorado veterinary hospitals that were the focus of the study.

## Marijuana Toxicity Exposure

There has been a much higher incidence of dogs suffering from marijuana toxicosis than cats. This is

because users often mix the drug into palatable baked goods, which is a particular problem if a dog is a renowned counter surfer.

However, your dog can also suffer poisoning from eating any part of the actual plant (including the leaves, seeds, stems, and flowers), from smoke inhalation, consuming hashish oil, or even from eating the feces of an individual that has ingested cannabis.

## Symptoms of Marijuana Poisoning in Dogs

Stumbling and crossing over feet, Dull and lethargic, Dilated pupils, Urinary incontinence, Vomiting, Tremors and shaking, Agitation.

**Tetrahydrocannabinol (THC)** is the potent psychoactive substance in marijuana and dogs have a much more severe reaction to this than humans. Symptoms are

typically visible within 30 minutes to an hour after ingestion of the drug, or sooner if inhaled.

Dr. Stacy Meola is a Criticalist at Wheat Ridge Animal Hospital in Colorado and was also one of the lead veterinarians involved in the above-mentioned study. She explains that “the most common sign is stumbling and crossing over their feet and walking like they are drunk (ataxic).” In the study, 88% of the dogs presented with this symptom. Around 50% of dogs will also likely appear dull and lethargic with dilated pupils and will flinch in reaction to fast movements toward their face.

“The most interesting sign in dogs is urinary incontinence,” says Dr. Meola, adding that around half of the dogs studied dribbled urine uncontrollably when they had marijuana in their system. “My guess is the drug would not be as popular if 50% of people dribbled urine when they used marijuana!”

Other symptoms include vomiting, tremors and shaking, agitation, and some dogs can become comatose.

## Treatment of Marijuana Poisoning in Dogs

Treatment is quite variable depending on the severity of the symptoms presented, and some dogs can be treated as outpatients at home, while others will require hospitalization for intravenous fluids and supportive care.

“In severely affected animals, we recommend a treatment called intralipid therapy, which is an infusion of lipid (the fat used in

IV nutrition support) to help bind the marijuana and allow it to be eliminated from the body faster,” Dr. Meola says. “With proper treatment, dogs will usually recover fully within one to two days.”

## Why It is Important to Seek Veterinary Support

Marijuana toxicosis is rarely deadly, and Dr. Meola is unaware of a fatality from marijuana ingestion alone. However, a high proportion of the cases of marijuana toxicosis in dogs involve combining the drug with chocolate or artificial sweeteners like Xylitol—both of which are also toxic to dogs—in the form of brownies or cookies. It is worth noting that medical-grade marijuana butter products may present a higher risk of more serious symptoms. These butters are commonly mixed into cakes and cookies.

Regardless of how your dog's marijuana ingestion occurs, you should always seek veterinary advice. “Because the potency of marijuana is variable and the amount in edibles is not regulated by a regulatory agency, it is very hard to know exactly how much a dog has ingested,” explains Dr. Meola. “With that said, we also do not know a toxic or fatal dose when inhaled or ingested, so it is always best to have a pet evaluated.”

**Our Dogs Are NOT to be Treated like Human Children! That robs them of their INSTINCTS...**

**Please tell the clinics or other advertisers you saw them in CLAWS Magazine**

# LOCAL CLASSIFIED EMPLOYMENT

CLAWS Magazine is building a sales team! Are you retired, a student or a spouse or significant other who can work from home. We offer UP TO 20% - top commission and some expenses. We are a new endeavor and need people with little or no experience. We will train the RIGHT people. Send a short email with your skill set and interest to: SALES  
C/O John Henderson  
clawsmag @ roadrunner . com

# AWP DOG GROOMING

Needs experienced Groomers NOW!!!

Ask About . . .

## HIRING BONUS

661-405-9114 \* 661.471.9160

44950 VALLEY CENTRAL WAY Ste 113 \* Lancaster, CA 93536  
Tue - Sat: 8AM - 6PM \* Sunday & Monday: closed

Rattlesnake Season is HERE . . .  
Are you ready. Our vaccines are available. It's better to be prepared.



~~\$32~~ **\$25**

With Coupon only  
No Cash Value.  
Expires 31 July 2022



## North Valley Veterinary Clinic

"A Passion for Pets, Compassion for People"

43619 Sierra Highway \* Lancaster, CA 93534 (661) 945-7906  
WWW.NORTHVALLEYVETERINARYCLINIC.COM

**Continued from pg 2: Class 2 Low-Level Cold Laser Therapy FAQ . . .**

the application, progress may be immediately evident: The number of sessions varies depending on the severity and chronicity of the disease process; the nature and characteristics of the specific ailments; the age and general health of the patient; and even nutrition level plays a role.

**Low Level Laser Therapy:****Increases healthy tissue regeneration:**

The Laser accelerates cellular reproduction and growth.

**Aids faster wound healing:** The Laser stimulates wound healing (fibroblast development) in damaged tissue. The improvement in recovery time is an important consideration.

**Increases metabolic activity:** Low Level Laser Therapy helps the body increase the output of specific enzymes, increases oxygen in the blood and enhances immune response.

**Reduces fibrous tissue formation:**

The laser reduces the formation of scar tissue following tissue damage from trauma, cuts, bites, scratches, burns, or following surgery.

**Who is allowed to use Low Level Laser Therapy?**

There are numerous specialties of health care and multiple FDA clearances granted for the use of Low-Level Laser Therapy. Doctors and therapists involved with animals, as well as humans, benefit their patients with the use of low-level laser therapy.

**Veterinary Medicine:** Veterinarians deal with a wide variety of animals and conditions. Low Level Laser Therapy is effective in all procedures for acute and chronic conditions, including neuromusculo-skeletal as well as organ conditions that are dealt with in clinical practice.

**Surgery:** Low Level Laser Therapy promotes post-surgical wound healing. Lasers have been proven to increase tissue healing, decrease scarring and pain.

**Chiropractic:** More and more veterinary practices are recommending chiropractic adjustments for animals. Laser therapy significantly enhances the benefit of these adjustments by decreasing inflammation and enhancing the vitality of the tissues.

**Massage:** Soft tissue therapy provides many benefits in the prevention of injuries or the recovery from injuries in animals. Low Level Laser Therapy provides many physiological benefits when combined with massage.

"A dog is the only thing on earth that loves you more than he loves himself." **Josh Billings**

**Certified Animal Chiropractor**

*Dr. D.S. Olson*

**Dr. Olson works with local veterinarians!  
If you have any questions about animal chiropractic and laser treatment, please feel free to call us.**

**661.726.2000 Cell: 661.802.9693**



**Dr. D.S. Olson**



**Call for appointment  
661.726.2000 Cell: 661.802.9693**

**Certified Animal Chiropractor  
www.quantumhealthchiro.com**



**Mention this Ad  
for a 20% discount on  
First Office Visit**